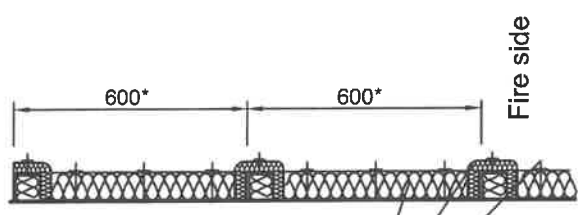


* Dimensions may vary depending on structural design and size of insulation material. All measurements in mm



70 mm SeaRox FB/FM 6020 between stiffeners and
 30 mm SeaRox FB/FM 6050 or
 35 mm SeaRox FB/FM 6040 over the stiffeners

3 mm steel pin
 with washer



Subject: A-60 Steel Bulkhead restricted
 Plate: SeaRox FB/FM 6020
 Stiffener: SeaRox FB/FM 6050 or SeaRox FB/FM 6040

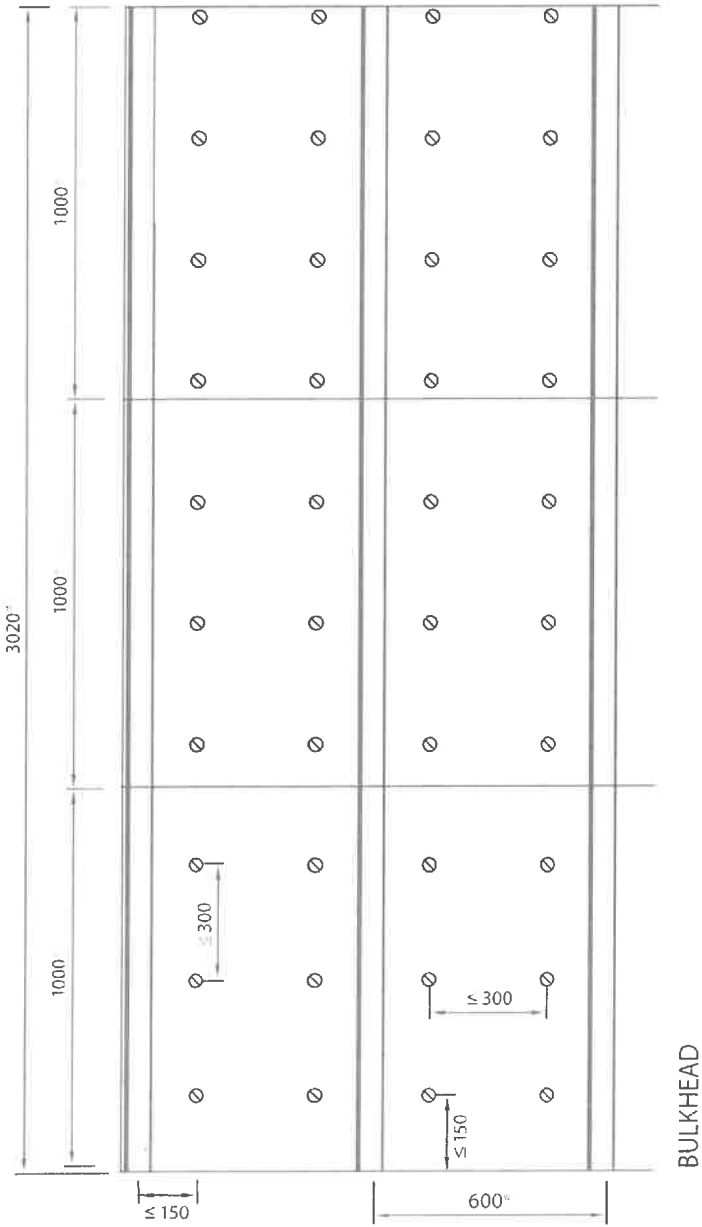
Date: 2021/10/25

Designer: DG

Drawing No. 150-1 / Rev 2

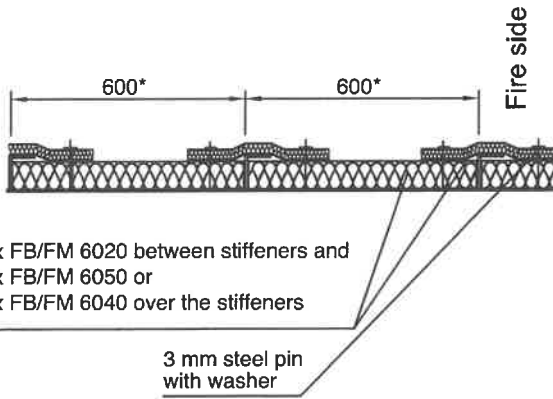


TECHNICAL INSULATION



All measurements in mm

* Dimensions may vary depending on structural design and size of insulation material.



70 mm SeaRox FB/FM 6020 between stiffeners and
30 mm SeaRox FB/FM 6050 or
35 mm SeaRox FB/FM 6040 over the stiffeners

3 mm steel pin
with washer



Subject: A-60 Steel Bulkhead restricted
Plate: SeaRox FB/FM 6020
Stiffener: SeaRox FB/FM 6050 or SeaRox FB/FM 6040

Date: 2021/10/25

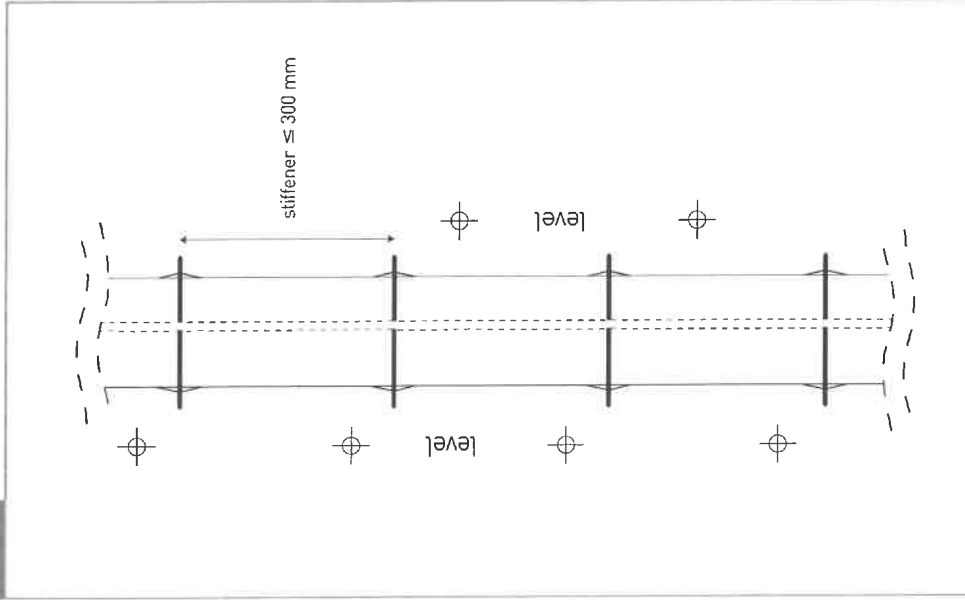
Designer: DG

Drawing No. 150-2 / Rev 2

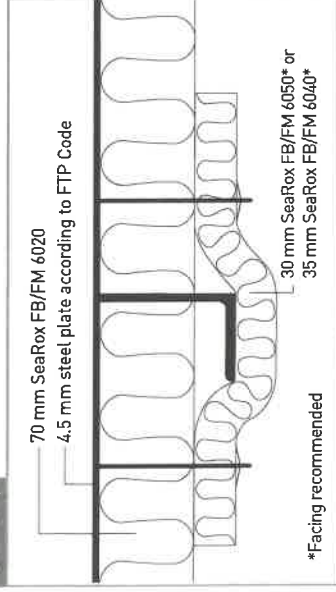


TECHNICAL INSULATION

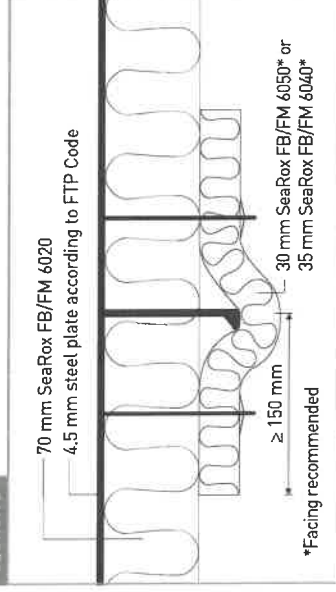
TOP VIEW



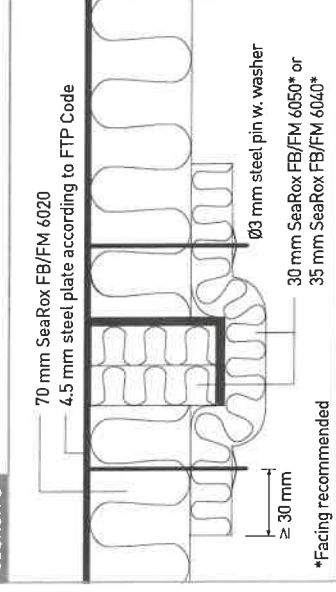
SECTION A



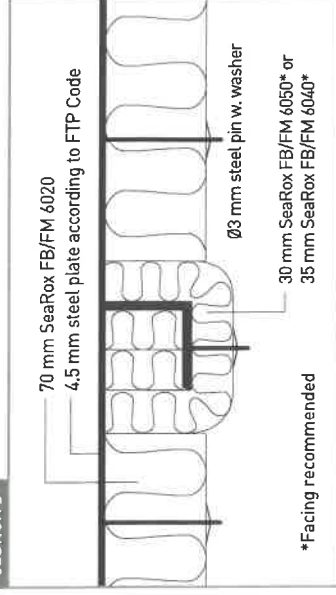
SECTION B



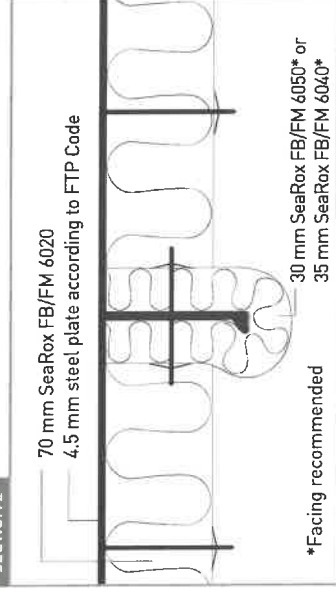
SECTION C



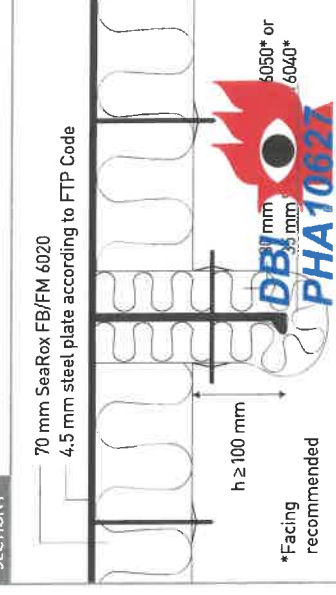
SECTION D



SECTION E



SECTION F



Subject: A-60 Steel Bulkhead restricted

Plate: SeaRox FB/FM 6020

Stiffener: SeaRox FB/FM 6050 or SeaRox FB/FM 6040

Date: 2021/10/25

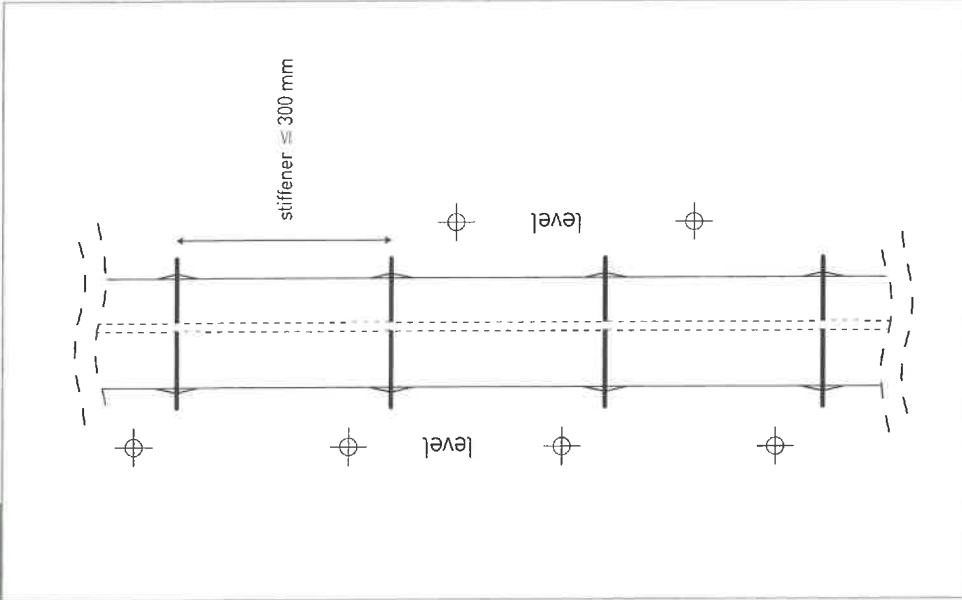
Designer: DG

Drawing No. 150-3 / Rev 2

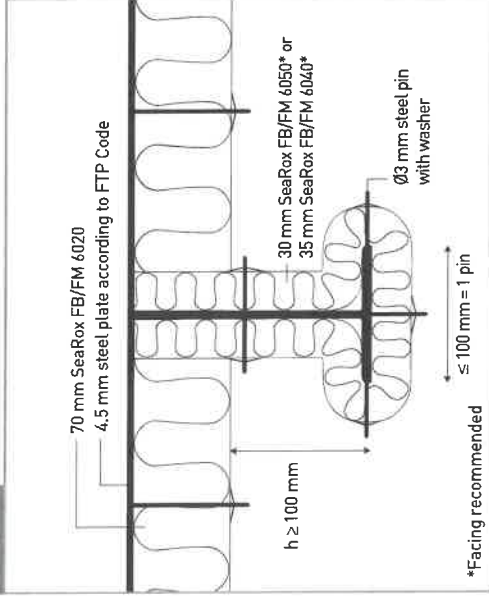


TECHNICAL INSULATION

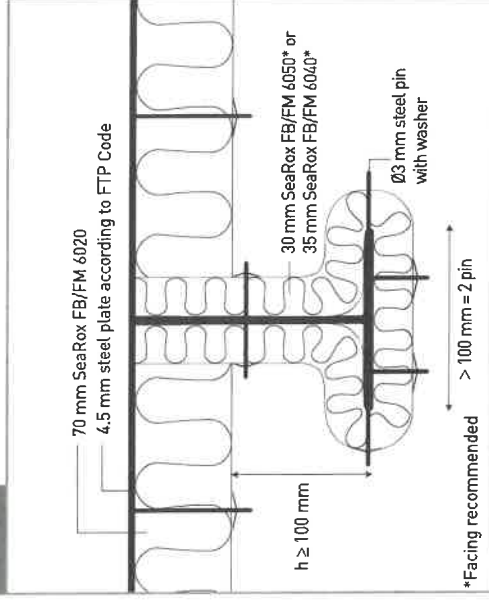
TOP VIEW



SECTION G



SECTION H



Subject: A-60 Steel Bulkhead restricted
Plate: SeaRox FB/FM 6020
Stiffener: SeaRox FB/FM 6050 or SeaRox FB/FM 6040

TECHNICAL INSULATION

Date: 2021/10/25

Designer: DG

Drawing No. 150-4 / Rev 1