

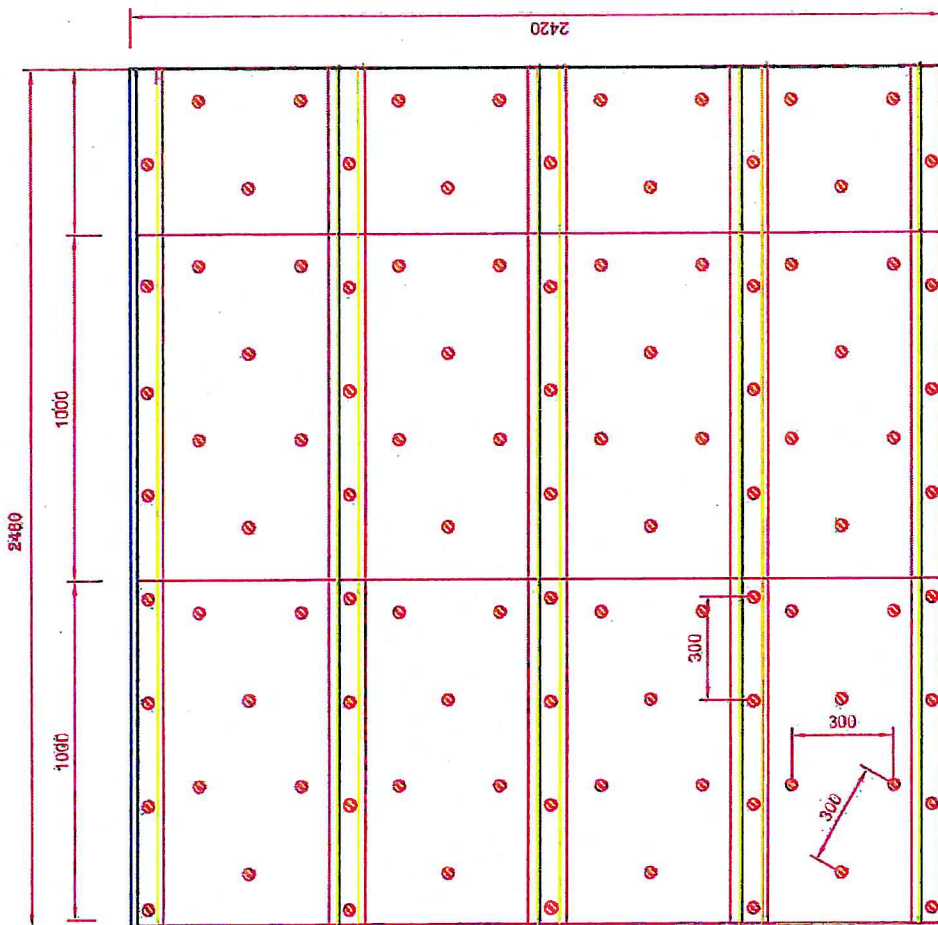
Date: 2017/21/04

Subject: A-60 Bulkhead SeaRox SL 620/ SeaRox SL 620

ROCKWOOL®
TECHNICAL INSULATION



ROCKWOOL®
TECHNICAL INSULATION



All measurements in mm

Bulkhead

Date: 2016/12/16

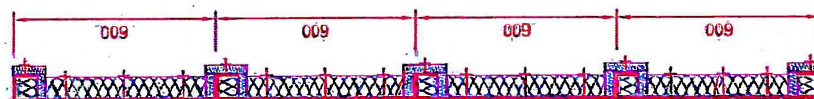
Subject: A60 Bulkhead, SeaRox SL 620 - 60/25 mm

Designer: DG

Rev.:

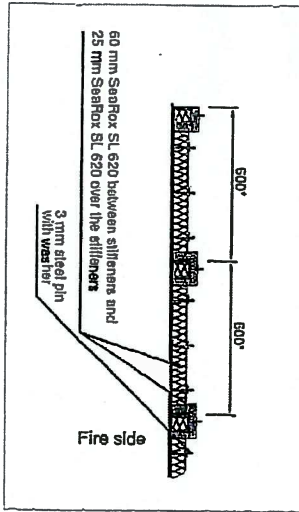
Scale: 1:20

Dwg No.: 520

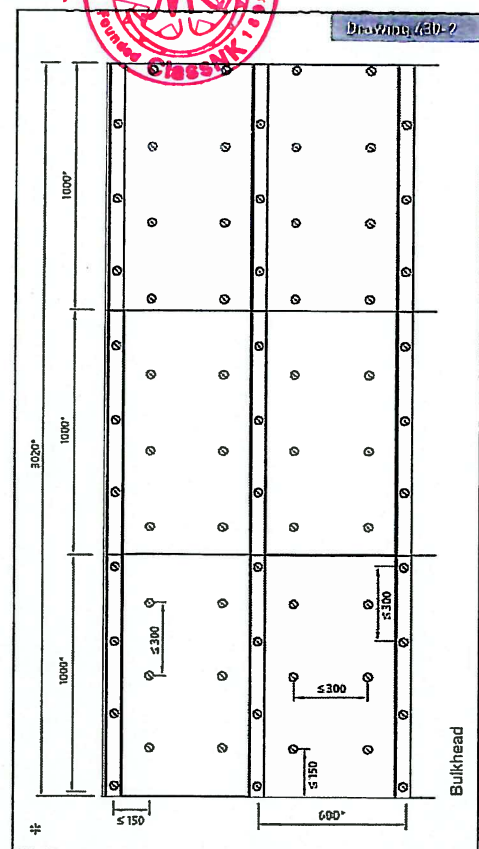
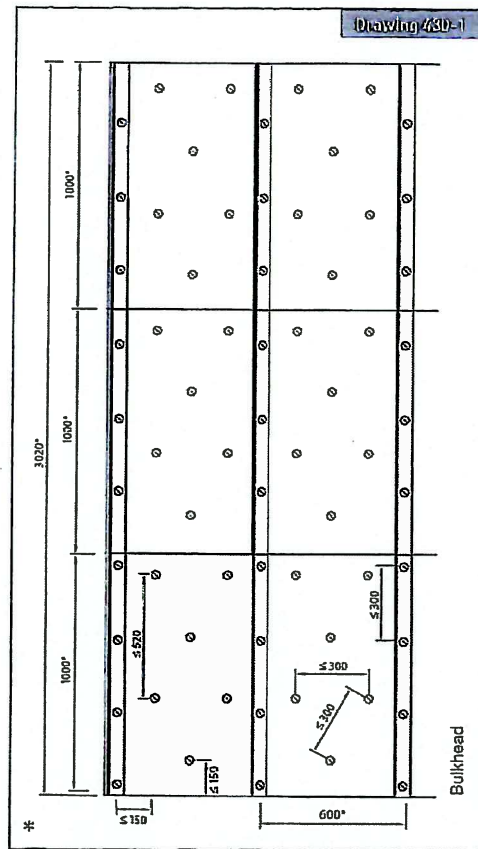


60 mm SeaRox SL 620 between stiffeners and
25 mm SeaRox SL 620 over the stiffeners

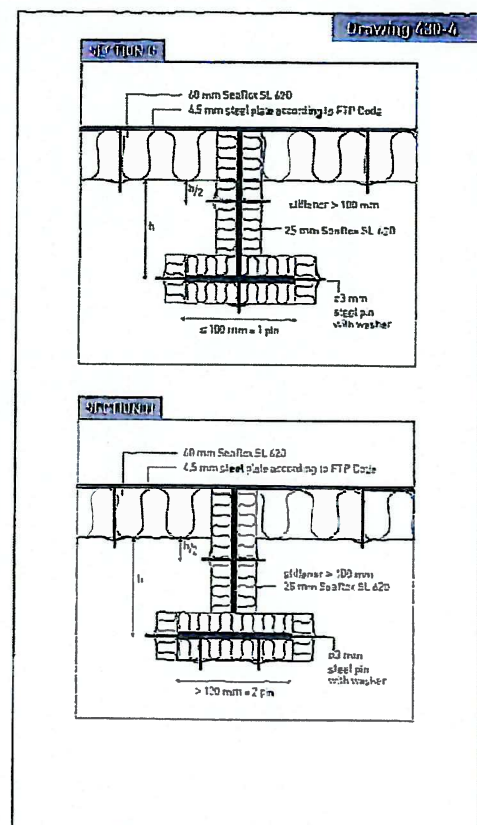
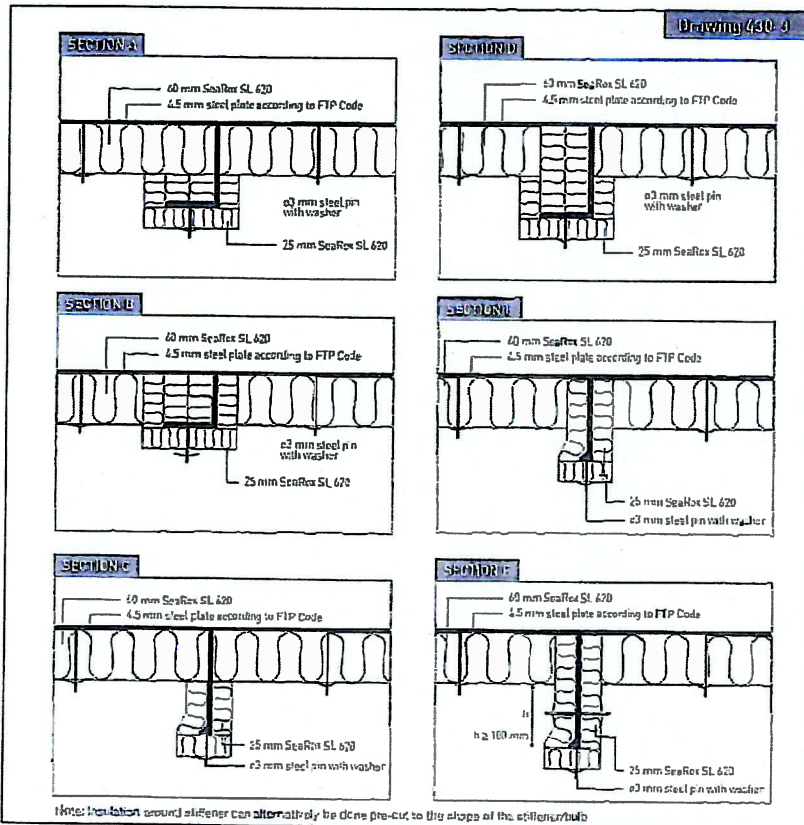
3mm steel pin with 30mm washer



Danish Institute of Fire and Security Technology
 File no. PHA 10905C



* Dimensions may vary depending on structural design and size of insulation slab.



All measurements in mm

Date: 2017/02/09

Subject: A-60 Bulkhead SeaRox SL 620/ SeaRox SL 620

Assessment Report Nos.:

ROCKWOOL®
 TECHNICAL INSULATION